



# 2-YEAR REPORT

October 2021-November 2023



relationships  
inspiring  
social  
enterprise

# TABLE OF CONTENTS

TABLE OF CONTENTS .....	2
LETTER FROM THE FOUNDER/ EXECUTIVE DIRECTOR .....	3
DAWN OF A NEW ERA: LETTER FROM COUNTRY DIRECTOR .....	4
INTRODUCTION .....	5
OVERVIEW OF OPERATIONAL LANDSCAPE .....	6
THEORY OF CHANGE .....	7
KEY ACHIEVEMENTS .....	8
PARTNERSHIPS .....	21
CHALLENGES & OPPORTUNITIES .....	22
WHAT'S NEXT - PRIORITIES FOR 2024 .....	23
MEET THE TEAM .....	25
FINANCIAL OVERVIEW .....	27

# LETTER FROM THE FOUNDER/ EXECUTIVE DIRECTOR



Dear Supporters and Friends,

Gratitude fills my heart as we reflect on the past two years, celebrating remarkable achievements in our mission to reduce poverty by supporting entrepreneurship through business incubation and community development. Despite global challenges, our resilient structure has allowed us to thrive. Our social enterprise projects continue to provide value, showcasing our reliability as diligent partners with whom organizations can achieve their goals with a socially responsible alternative to the norm.

## Key Achievements over the past two years:

1. Our longstanding vision is now a reality with a 100% Basotho team in Lesotho. This embodies our commitment to the empowerment and dignified development of African youth.
2. Two successful cohorts of **in loco** fellowships have empowered local talent and communities, providing invaluable opportunities for them to thrive through social impact projects.
3. A major milestone was reached with the launch of our Research and Innovation Program thanks to the support of Irish Aid and our partnership with Action Ireland Trust, supporting fellows and communities with the development and deployment of sustainable building materials. This aligns with our environmental goals to find affordable, locally sourced, low-carbon, thermally efficient building materials.
4. International recognition continues to underscore our global impact from the invitation to design Lesotho's Pavilion at the prestigious Triennale in Milan to the and increasing number of collaborations with esteemed universities worldwide.

## Looking ahead to 2024 key events are:

- **Expansion:** Responding to demand in Sub-Saharan Africa we have initiated work with vulnerable women's groups in Kenya and will be continuing to identify partnerships with organizations that share our goals in entrepreneurship development.
- **A first for Southern Africa:** Completing Southern Africa's first-ever FSC-certified project, a timber football stadium for Kick4Life, exemplifying our commitment to sustainability and community impact.
- **Bringing ideas to life:** Constructing demonstration buildings from ICEB (Interlocking Compressed Earth Bricks) and other sustainable low-carbon materials as proof of concept from our Research and Development work.

In closing, I extend deep gratitude for your unwavering support. Together, we are making a meaningful difference in the lives of many, and I'm excited about the continued journey and positive change that lies ahead.

With heartfelt appreciation,

A handwritten signature in dark ink, appearing to read 'D. Gusman'.

Daniela Gusman  
Founder

rise

# DAWN OF A NEW ERA: LETTER FROM COUNTRY DIRECTOR



From the onset, **rise** has been committed to empowering young Basotho in the fields of the Built Environment and Entrepreneurship, fostering a mindset shift that turns job seekers into job creators. From the bustling streets of Maseru to the dust-kissed villages nestled in the mountains, stepping into the role of Country Director feels like a homecoming, not just to this beautiful land, but to the heart of **rise**'s mission: to reduce poverty by supporting entrepreneurship through business incubation, learning by doing and community development.

As we celebrate six years of **rise** in Lesotho, it's the faces, not the figures, that fill my mind. I see the sparkle in the eyes of a young woman, the first female mason in her village, as she confidently lays bricks for a community center. I hear

the excited chatter of recent graduates from our **in loco** program, their dreams of becoming architects and engineers taking flight. I feel the ground vibrate with pride as the community comes together to inaugurate the first-ever environmentally sustainable school kitchen, built by their own hands and ingenuity.

This is the true impact of **rise** – not just bricks and mortar, but a fundamental shift in mindsets. We're breaking down barriers, not just in the construction industry, but in gender norms and environmental consciousness. We're not just building buildings, we're building futures.

Take the example of the new FSC Certified Timber stadium. It's more than just a sporting arena; it's a beacon of hope. It signifies jobs for hundreds of young people, income for local businesses, and a testament to Lesotho's ability to innovate and lead the way in sustainable construction. But most importantly, it's a symbol of unity, a place where communities will come together to cheer, laugh, and celebrate their shared triumphs.

And there's more to come. Our dedicated Research and Innovation team is already unlocking new possibilities, using local materials and techniques to create affordable, environmentally friendly housing solutions. Our partnership with Irish Aid is fueling groundbreaking research projects that will not only benefit Lesotho but leave a lasting legacy for generations to come.

Of course, this journey isn't without its challenges. Lesotho's dependence on imported materials is a hurdle we're determined to overcome. But like the Basotho women who refuse to be silenced in a male-dominated field, we will meet these challenges with unwavering innovation and perseverance.

As I stand here, amidst the vibrant tapestry of Lesotho's landscapes and faces, I am humbled by the responsibility entrusted to me. I am not just a Country Director; I am a witness to the quiet revolutions happening every day in the hearts and minds of young Basotho. Their stories are my motivation, their successes my reward. As we move into the next chapter, I pledge to be their voice, their champion, and their partner in building a brighter future, brick by brick, dream by dream.

Together, we will not just empower young Basotho, we will change the narrative of Lesotho itself. This is not just a journey towards a 100% Basotho team; it's a journey towards a Lesotho where every young person can envision themselves building, leading, and thriving. This is the legacy we are crafting, and I am honored to be a part of it.

With gratitude and boundless optimism,

A handwritten signature in black ink, appearing to read 'Reitumetse Nthako'.

Reitumetse Nthako  
Country Director  
**rise**

# INTRODUCTION



Welcome to **rise** International's bi-annual Report for 2022 to 2023, a testament to our unwavering commitment to empowering the youth of Lesotho and fostering sustainable development in the region. At **rise**, we believe in the transformative power of education, entrepreneurship, and sustainable infrastructure to uplift communities and create a brighter future for the next generation.

In the past two years, we have celebrated significant milestones, made possible through the collective efforts of our dedicated team, resilient partners, and the inspiring young entrepreneurs who have embraced our vision for change. From the successful completion of sustainable infrastructure projects to the establishment of key strategic partnerships, our journey has been defined by a relentless pursuit of innovation and impact.

As we navigate the challenges and opportunities of the ever-evolving landscape, we remain steadfast in our mission to equip young entrepreneurs with the skills and resources they need to become the architects of their success and the champions of sustainable development in Lesotho. Join us as we reflect on the achievements of the past two years and set our sights on a future filled with promise and possibility.

# OVERVIEW OF OPERATIONAL LANDSCAPE

For the past six years, **rise** has worked in Lesotho, a landlocked country, completely encircled by South Africa.

## LESOTHO FACTSHEET

### GENERAL INFORMATION



Approximately 2.4 million inhabitants



More than 50% of the population lives below the poverty line on less than USD 2 per day

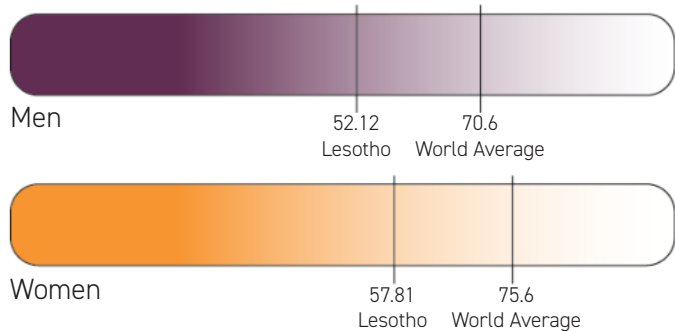


The youth unemployment rate currently stands at over 40%

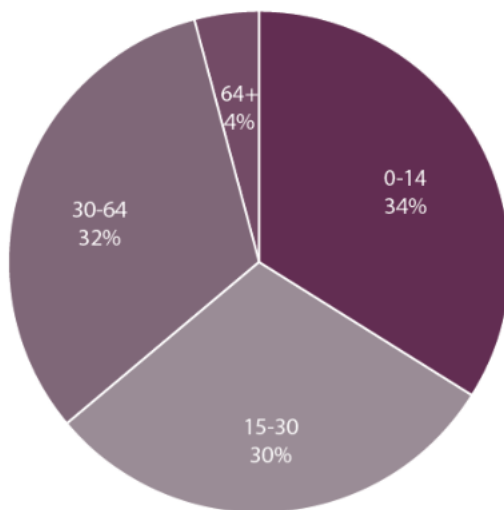


Most households rely on coal and paraffin to heat their houses due to low thermal efficiency of building materials

### LIFE EXPECTANCY



### AGE DISTRIBUTION



### GEOGRAPHICAL LOCATION



A priority of **rise** International is to create employment by supporting entrepreneurs to start their businesses and to facilitate the transformation of the construction industry through the adoption of local, sustainable, low-carbon building materials. This work has the support of the Government of Lesotho and various forums and discussions with key stakeholders are already underway in a collaborative effort to achieve this objective.

# Theory of Change



## Problem Statement

- 40% of youth face unemployment and lack access to essential resources & skills in order to find or generate employment for themselves.
- 80% of social impact investments favor foreign entrepreneurs.
- In Africa, buildings drive 37% of energy CO2 and 50% material extraction, worsening social and environmental inequalities
- Quality issues persist in design and construction in low income communities.



## Target Groups:

- Unemployed vulnerable youth
- Vulnerable communities
- Local African entrepreneurs



## Pillar 1: Entrepreneurship Development

**Goal:**  
Enhance the entrepreneurship ecosystem for aspiring local African entrepreneurs

### Assumptions

- Vulnerable youth are interested in entrepreneurship
- Entrepreneurship alleviates poverty
- Entrepreneurs provide in-demand products & services
- Local entrepreneurs in Africa are willing to participate in training & incubation programs

### Risks

- Economic downturn affecting the demand for entrepreneurs' products & services
- Limited interest or commitment from local entrepreneurs
- Resistance to the adoption of an entrepreneurial mindset
- Continued favoritism from investors for foreign entrepreneurs rather than in African entrepreneurs

### Through:

- Design, build, and entrepreneurship training programs
- Business Incubation Services
- Entrepreneurship training programs

### We help

- Increase the pool of African entrepreneurs and talent
- Increase the number of employed youth
- Promote entrepreneurship as a viable solution to poverty
- Increase innovation
- Decrease unemployment
- Decrease poverty

## Pillar 2: Promoting Social Entrepreneurship

**Goal:**  
Promote awareness about SE and increase capacity of community partners to implement SE projects

### Assumptions

- There is a demand for Social Enterprise
- Community partners are able to implement SE projects once they receive training

### Risks

- Lack of demand for SE Training services offered
- Lack of ability of communities to implement SE activities successfully
- Economic downturn affecting the success of SE activities

### Through:

- Workshops, trainings, webinars, lectures, talks, presentations and meetings on Social Enterprise

### We help

- Increase the ability for social impact providers to be responsive to community needs rather than to donor demands
- Improve the quality of lives thanks to more social impact services being provided

## Pillar 3: Innovative Building Methodologies

**Goal:**  
Enhancing design and construction quality while advocating and using eco-friendly, sustainable building materials in Sub-Saharan communities through Research and Innovation.

### Assumptions

- Research and demo projects will influence the market to wanting to build more sustainably and with eco-friendly materials
- Research findings are accessible and influential
- Demand for sustainable materials and improved design & construction methodologies
- Advocacy and communications are effective at increasing awareness and action
- Collective decision-making between key decision-makers is possible
- Research findings will influence attitudes and knowledge
- Entrepreneurs are willing to adopt sustainable practices
- Participants are receptive to participatory design methodology
- Participatory Design is utilised by those trained in it

### Risks

- Limited accessibility or influence of existing research findings.
- Lack of funding for research and advocacy work
- Ineffectiveness of advocacy efforts
- Limited collaboration among key decision-makers
- Resistance to participatory design
- Ineffectiveness of the PD toolkit
- Limited impact of research findings
- Resistance to adopting sustainable practices

### Through:

- Research and prototype alternative low carbon eco-friendly building materials
- Build demo infrastructure with improved building methodologies in loco fellowships
- Webinars, podcasts, conferences and workshops
- Influence & Advocate for improved building practices
- Training in Participatory Design

### We help

- Improve in the quality of design and construction
- Increase demand for sustainable design and thermally efficient low carbon building materials
- Increase use of locally produced sustainable materials
- Establish a novel sector focused on sustainable building materials
- Create Jobs
- Reduce GHG emissions

## Our Mission

To reduce poverty by supporting entrepreneurship through business incubation learning by doing and community development

## Our Vision

An Africa where vulnerable youth transform from job seekers to job creators

# KEY ACHIEVEMENTS

As we celebrate our accomplishments in the past 2 years, it is essential to acknowledge the collective efforts of our dedicated team, partners and most importantly, the young entrepreneurs who have shown remarkable resilience and determination. Some key achievements from these two years include design, construction, social enterprise projects, and research and advocacy initiatives.

## PILLAR 1: ENTREPRENEURSHIP DEVELOPMENT

### 1.1 in loco FELLOWSHIP

#### in loco impact the last 6 years

To date, **rise** has positively impacted over 17,600 lives in Lesotho through 'in loco', our learning-by-doing program. This 10-month fellowship provides crucial support for vulnerable unemployed youth through innovative design, build & entrepreneurship training. So far, five cohorts of 52 fellows have completed the following five projects:



*"Through my internship at **rise** during the **in loco** fellowship, I learned not only to seek employment but also how to become an entrepreneur capable of generating employment opportunities. My time at **rise** provided valuable networking opportunities that significantly influenced my growth in the Marketing Sector, after I was referred to this project, this led to the acquisition of several new clients". Ntina Ramokho Pioneer*

## Stadium of Life for Kick4Life (March 2023 - Ongoing)



Mockup of new Kick4Life seating

Southern Africa's first FSC certified stadium

**Where:** Maseru

**Users:** Local, vulnerable youth through youth empowerment programs

**Goal:** Provide social impact to Basotho youth and alleviate poverty through entrepreneurship

**Client:**



**Built as part of:**



Render new Kick4Life Stadium

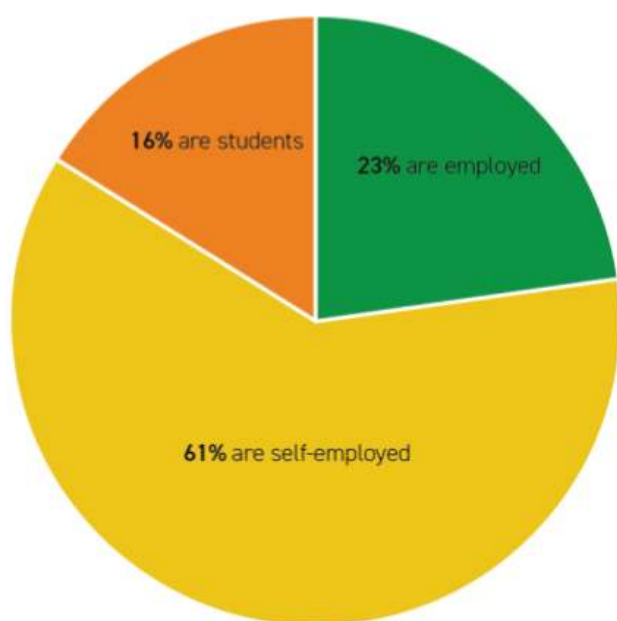
*"Because I believe in design that speaks to the end user, the participatory design process was both fascinating and an educative tool to take away from the fellowship. Being a site architect for the past few months gave me the confidence to practise what I learned in school. With these gains and more the fellowship has helped me to grow in one way or another and with all that I am learning, I already see an improvement in other avenues of my life outside of the fellowship."* Lintle Mofolo 2023 **in loco** Fellow

## 1.2 BUSINESS INCUBATION

### Continued impact of the Pioneer business incubation program (ongoing)

Upon graduation from the **in loco** program our young entrepreneurs graduate into 'Pioneers' and enter our 3-year business incubation program. This provides them with access to vital support and services including business coaching, mentorship, a tool loan library, a workshop and office space, networking opportunities, and so much more.

#### After graduating from **in loco** program



Each Pioneer typically creates employment for 3.5 others after graduating



Out of 52 Pioneers, 32 started their own companies. Collectively they have created 160 new jobs



On average, **rise** refers projects worth \$136,000 to fellows within 12 months of graduating

*"In 2019, a year post my Architectural Technology diploma, I joined **rise**'s fellowship program, drawn by their impactful community projects. After successfully completing the fellowship, I graduated as a 'Pioneer,' entering the 3-year Business Incubation Program. Over the past four years as a Pioneer, **rise** has referred projects totaling M319,847.84, reflecting the sustained success and collaborative endeavors during our journey together. With **rise**'s support, I've created jobs for three individuals, a success nurtured by the business incubation Program. **rise** has not only enhanced my entrepreneurial spirit but also allowed me to contribute meaningfully to the community. Excited for the continued positive impact with the **rise** family. Thank you, **rise**!"* Seabata Motanyane 2019 **in loco** Fellow

### 1.3 TRAINING PROGRAMS

As part of our mission of supporting entrepreneurship we have continued to offer trainings and workshops. To do this we have been working together both with local as well as international organizations, allowing us to reach a wider public and expand the influence of the work we do.

#### Training of Trainers - Employability, Comms & Fundraising & partnership building for Artists (April 2023)



5-day training for the staff of Alliance Française de Maseru

**Where:** Maseru

**Participants:** Alliance Française staff

**Goal:** Equipping the team to guide artists on marketing strategies, grant writing, partnership building and fundraising, as well as how to run employability skills programs for youth under their Bacha Project

**In cooperation with:**



#### World Bank (Oct to Dec 2022)

**rise** International collaborated with the World Bank on a project addressing the critical issue of youth unemployment in Lesotho. This collaboration was part of the broader initiative outlined in the World Bank's report titled "Unlocking the Potential of Basotho Youth."

Find our video here: <https://www.youtube.com/watch?v=5m-D3lASe0Q>

#### International Workshop (August 2022 & 2023)

Hands-on projects, guided by the principles of architecture, construction, and engineering

**Where:** Maseru

**Participants:** Architects and students from Italy, Belgium, and Greece as well as local volunteers

**Goal:** Education of participants and contributing to local communities



## 1.4 DESIGN AND CONSTRUCTION PROJECTS

We are happy to continually be able to support social enterprises and organizations by designing and building new infrastructure for them. In the past two years we have been able to work on projects in many different sectors, ranging from recreational to heritage and residential. We continue to find new partners with whom we can work to improve social programs in Lesotho as well as build capacity and promote entrepreneurship.

### Building low cost learning spaces and a library for The Hub (October 2023 - Ongoing)

Design and convert two shipping containers into a library, learning and storage space

**Where:** Morija

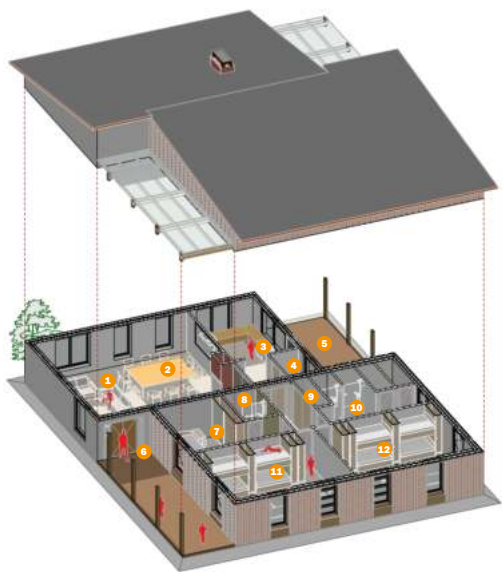
**Goal:** Provide extra space to allow the Hub to continue their mission of providing affordable access to computers, the internet, a library, and digital media training

**Client:** 



Container conversion

### Designing foster homes and master plan for Beautiful Dream Society (BDS) (July to Dec 2023)



Isometric drawing of a Foster Home designed by **rise**

Masterplan for future development of 20,000sqm plot and design of phase one, including 4 foster homes

**Where:** Mazenod, Ha Takalimane

**Users:** 24 orphaned and vulnerable children at risk of human trafficking

**Goal:** Safe, qualitative spaces to provide education and medical care for orphaned and vulnerable children

**Client:**



BDS Site Masterplan designed by **rise**

We are delighted to continue to be selected as the implementing partner for Action Ireland Trust (AIT) in 2019. The 5 Hub Schools project includes the design and build of running water toilets, boreholes, school kitchens, rainwater harvesting systems and food gardens for 4 primary and 1 high school, identified by the Ministry of Education & Training as high-priority schools in the densely populated Lithabaneng area in Maseru district. These schools were grappling with poor health and sanitation facilities, impacting the learning experience of over 5,500 students. Our collaboration with Action Ireland Trust has been instrumental in addressing this critical need and making a positive impact on the lives of these students.

### Lithabaneng Primary School Running Water Toilets (Ongoing)

Running water toilets for the learners and teachers

**Goal:** Healthier learning environment and prioritization of student and staff well-being

**Constructed by Pioneers from:**



Old latrines



New toilet blocks

### Boreholes (April 2022 - March 2023)

Creation of three boreholes

**Where:** Seboka, Lithabaneng and Leqele Primary Schools

**Goal:** Continuous access to clean drinking water



Seboka Borehole



Leqele Borehole

## Seboka Primary School Toilets (April 2022)

School toilets in Seboka

**Where:** Maseru

**Users:** 700 students

**Goal:** Provide learners and teachers with hygienic and dignified sanitary facilities

**Constructed by Pioneers from:**



Old Seboka Latrines



New Seboka Toilets

*"The pit toilets were unhygienic, especially for girls. **rise's** intervention improved sanitation and water access, fostering a supportive environment. Agricultural activities thrived, providing both a market and a feeding program. The modern kitchen and borehole reduced expenses, ensuring cleaner facilities and allowing funds to be allocated elsewhere." Mr Masoabi, Seboka Primary School.*

## Legele Primary School Kitchen (March 2022)

Brand new kitchen

**Where:** Maseru

**Users:** More than 600 students

**Goal:** Clean, smokeless and efficient meal preparation place

**Constructed by Pioneers from:**



**Supported by:**



Old Legele kitchen



New Legele kitchen

*"Our collaboration with **rise** has yielded several successes and fostered a strong bond. Before their involvement, we faced challenges preparing meals for our students in open spaces, often disrupted by harsh weather conditions. Thanks to **rise** and AIT, we now have a functional kitchen that allows us to cook regardless of the weather. Moreover, the borehole installation provided by them has significantly reduced our water expenses from WASCO. We are grateful for their support."* Mr. Hlomohang Ntsheli, the Principal of Leqele Primary School.

## Food Gardens ( 2021)

Creation of Food Clubs

**Where:** All 5 Hub Schools

**Users:** More than 5,500 students

**Goal:** Empower local Basotho schools to grow food, generate income and educate learners

**Constructed by**

**Pioneers from:**



New food gardens



New food gardens being used by students

## PILLAR 2: PROMOTING SOCIAL ENTREPRENEURSHIP

Aside from our construction projects we continue with our mission of promoting social entrepreneurship and building capacity through various other initiatives as well. The last two years we made some huge steps, both nationally and internationally, in this regard. We teamed up with organizations and individuals from Lesotho and abroad to provide training to hundreds of motivated participants. We were also delighted to take part in multiple international projects, expanding the influence of our work even further and educating people from all over the world about Lesotho.

### Creolabs (2022 - ongoing)

Africa's first pilot Creolab - creative thinking after-schools program

**Where:** All 5 Hub Schools

**Users:** 153 learners and 15 teachers

**Goal:** Nurture creative thinking among teachers and students

**Result:** Successful launch of products and various innovations by the learners



Innovation Fair



Innovation Fair

### Webinars and Lectures (Oct 2021 - Ongoing)



Lecture in collaboration with Limkokwing Lesotho

Lectures and webinars featuring international experts

**Users:** Young entrepreneurs worldwide

**Goal:** Educating and supporting the users on business development and the built environment

**Results:** 13 lectures and webinars held with hundreds of participants in person and online

Subscribe to our YouTube channel here:

[https://www.youtube.com/@riseint\\_org](https://www.youtube.com/@riseint_org)

### Fundraising Workshop for Social Enterprises (Sept 2022)

Two-day fundraising workshop

**Where:** Morija

**Goal:** Provide the social enterprises with strategies and tools for generating income, as well as an understanding of their role as social enterprises

To support:

the hub



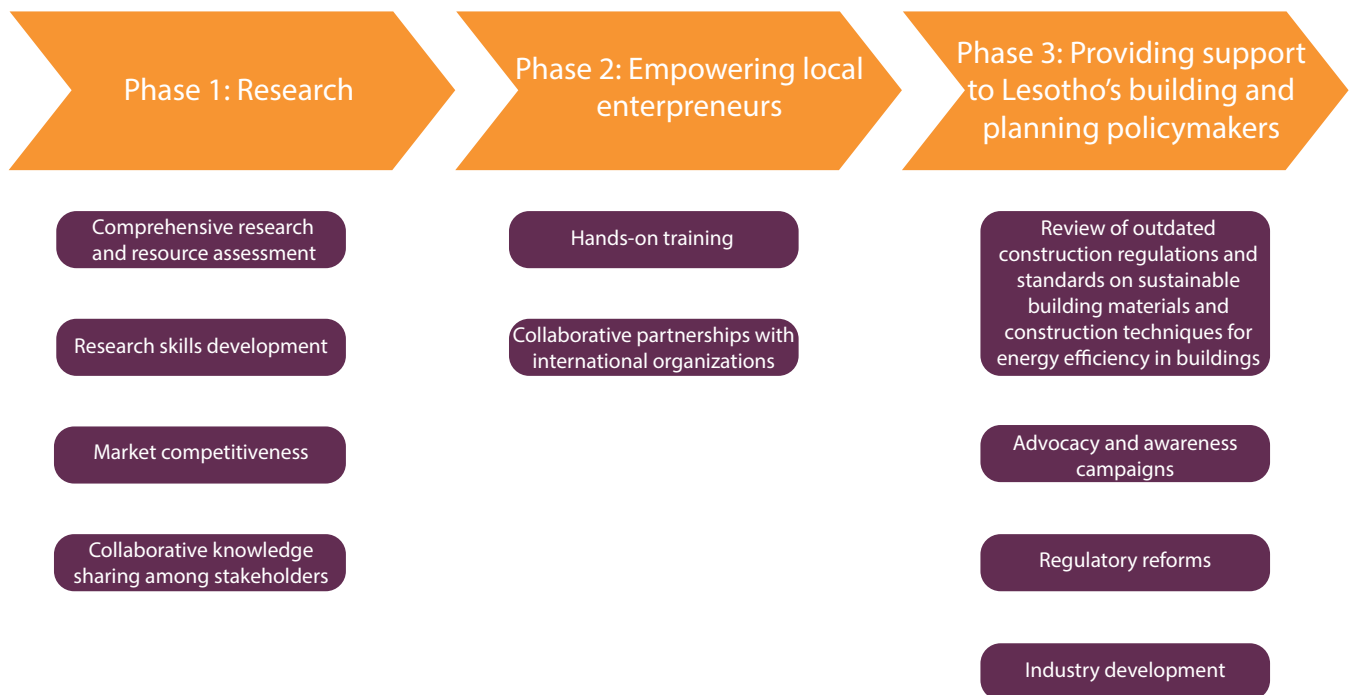
## PILLAR 3: INNOVATIVE BUILDING METHODOLOGIES

### Research and Innovation (Sept 2022 - Nov 2023)

R&I program with a focus on indigenous and alternative construction materials.

**Goal:**

- Provide sustainable construction methodologies in Lesotho
- Support policymakers in reviewing and revising outdated construction regulations and standards regarding the use of sustainable materials and construction techniques for energy efficiency in buildings.



For a comprehensive overview and detailed insights, we recommend consulting the table of deliverables, where you can find a thorough breakdown of the project components, outcomes, outputs, challenges and opportunities that can be seen [here](#).

**In partnership with:**



**Supported by:**



### Inclusive Design & Climate Change in Built Environment (Oct 2021 - March 2022)

Following six months' worth of research and various initiatives, in March 2022, **rise** facilitated a Universal Design Roundtable for Maseru City and other officials from the Ministry of Local Government, funded by the British High Commission in Lesotho, focusing on regulatory and legislative building codes for inclusive design, improved urban planning practices, and action planning.

**In partnership with:**



**Supported by:**



## Global Skills Opportunities Students Exchange Program with Athabasca University, Canada (Nov 2023)



Athabasca University Students & Faculty Members

Hands-on activities, including participatory design and architecture's design-build activities with the local community

**Where:** Morija

**Participants:** 9 international students and multiple Morija community members

**Goal:** Holistic education, seamlessly integrating theory with impactful, real-world engagement

With support from:



## Day Care Centers Designs with University of Malta (March to June 2023)



Online Training by **rise** to University of Malta Masters Architecture students on Participatory Design

Transformative designs for Day Care Centers

**Where:** Maputsoe, Lesotho's northern industrial area

**Users:** Working mothers in the textile industry

**Goal:** Creating sustainable solutions for the well-being of families in the district, especially of the children of low income earners

In collaboration with:



*"In light of the invaluable experiences and outcomes of our collaboration with **rise**, the Department eagerly anticipates future partnerships that will continue to enable our students to engage with the multifaceted nature of architecture and urban design in today's contemporary context. We look forward to further opportunities to inspire and empower the next generation of architects and urban designers."*

Dr Irina Miodragovic Vella, Head of the Department of Architecture & Urban Design at University of Malta

## Seboka Primary School Kitchen (April 2023)

Our very first building made from sandbags

**Where:** Maseru

**Users:** 700 students

**Goal:** Clean, smokeless and efficient meal preparation place

**Built as part of:**



Old Seboka kitchen



New Seboka kitchen finished



New Seboka kitchen sandbag construction

## Heritage and Conservation (October 2021 - December 2022)

Virtual workshops culminating in an in-person masterclass on Heritage and Conservation

**Where:** Makeneng and Morija

**By:** South African Experts

**Participants:** Over 30 professionals and community artisans

**Goal:** Exchange knowledge in heritage conservation

**Result:** Successful stabilization of one structure protecting it from further weather damage

**With support from:**



European Union



Italian Embassy in Pretoria



Plastering of old book depot

## Lesotho Pavilion at Triennale Exhibition Milan, Italy (July - December 2022)

Lesotho's presence at Milan's Triennale Museum was a significant achievement, showcasing the country's connection to water and its unique identity. Led by Giada Zuan in collaboration with **rise** and Milan's AOUMM architects, the exhibition, titled "Lesotho Water Realms," explored this interconnection between landscapes, society, and spirituality.

<https://riseint.org/lesotho-exhibits-at-triennale-milan-italy-for-the-first-time/>



Lesotho Pavilion at Triennale in Milano



His Excellency Ambassador of Lesotho to Italy Chief Thesele 'Maseribane

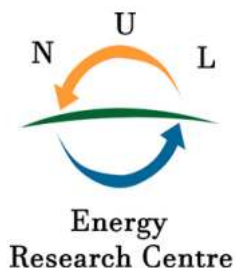
*"Since I met **rise**, my understanding of the country has incredibly improved, and we had the opportunity to set up two major exhibitions in Milan, during the Triennale and the design week. Both were very successful and could not have happened without **rise**'s help" Matteo Poli from Politecnico Di Milano*

## Energy Research Centre (September 2022)

Collaboration through joint curriculum review, teaching as well as co-teaching sessions on Sustainable Energy Solutions for Communities, emphasizing practical experiences in Participatory Design Facilitation and Implementation

**Goal:** Enhance human resource capacity in Lesotho

In collaboration with

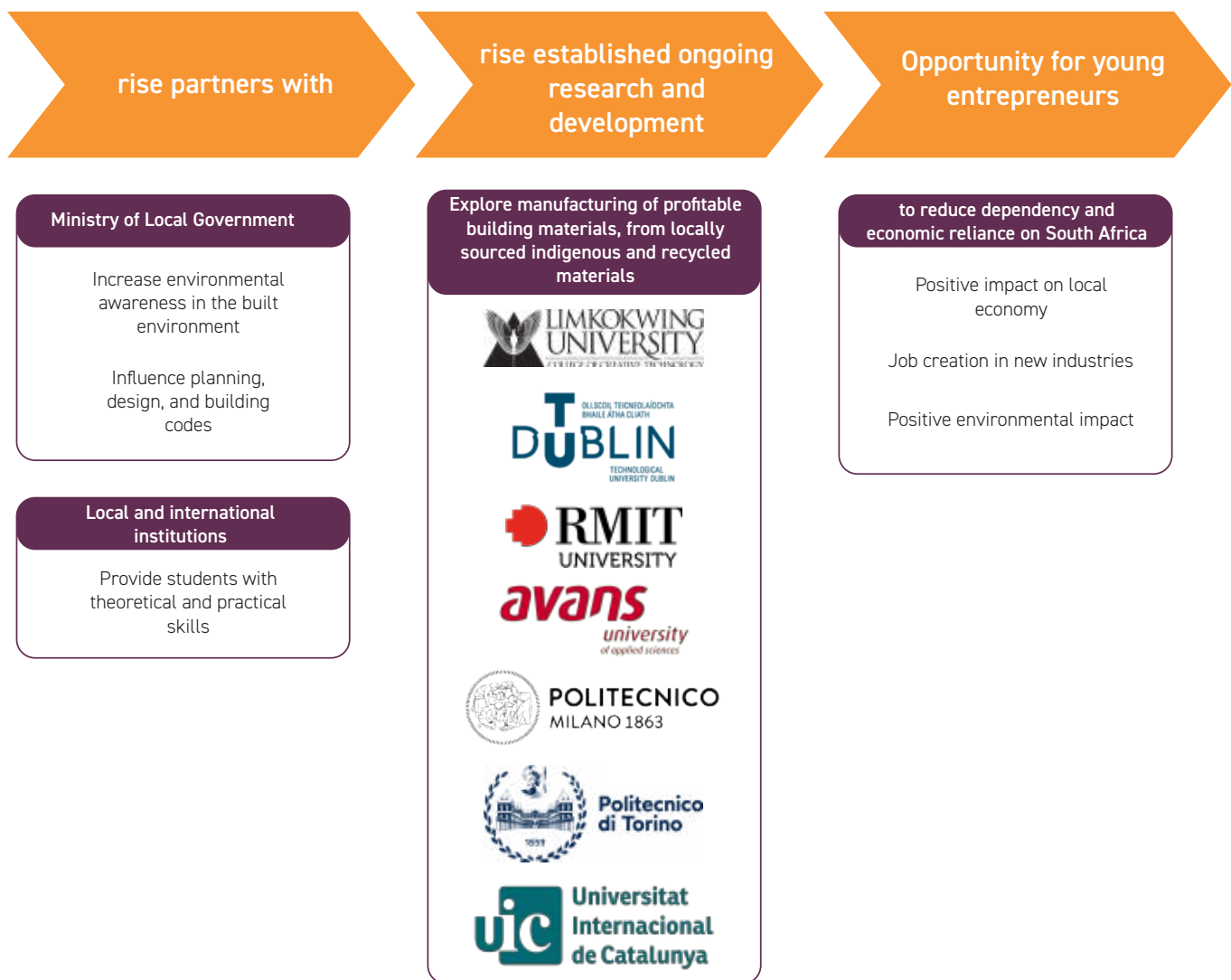


# PARTNERSHIPS

**rise** prioritizes community engagement, partnering with organizations serving vulnerable communities for sustainable social enterprise projects. With a Community Partnership Strategy, **rise** targets communities capable of program implementation, bridging skill and resource gaps through connections with specialized organizations for capacity building.

From 2022 to 2023 these are the community partnerships that have led to the implementation of successful social impact projects:

## 1. Ministry of Local Government



## 2. Affordable Housing Prototype:

On 4th November 2022, **rise** formalized its partnership with Habitat for Humanity Lesotho. Since then the 2 organizations are embarking on an exciting journey of building Lesotho's first ever affordable housing prototype constructed entirely out of interlocking compressed earth bricks, for a vulnerable family in the peri urban village of Mapoteng, in Berea, Lesotho.

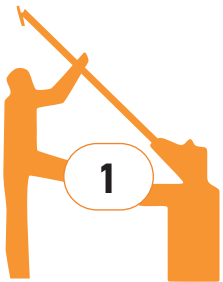
# CHALLENGES & OPPORTUNITIES



# WHAT'S NEXT - PRIORITIES FOR 2024

## Overall Goal:

**Generate excitement and secure investment from potential donors by showcasing our innovative work and its potential impact throughout Sub-Saharan Africa.**



### **Goal: Establish a successful and sustainable production model for ICEB and Hemp.**

#### Activities:

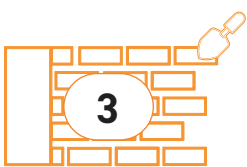
- Secure funding for initial production equipment and materials.
- Identify and partner with local farmers and producers of hemp.
- Develop training programs for cultivating and processing ICEB and Hemp.
- Conduct research on optimizing production methods.
- Establish market channels and partnerships for selling ICEB and Hemp products



### **Goal: Develop and implement solutions for affordable housing using ICEBs.**

#### Activities:

- Conduct research on using ICEBs in construction and their cost-effectiveness.
- Partner with architects, engineers, and builders to design and construct affordable housing prototypes.
- Develop a financing model for affordable housing projects using ICEBs.
- Advocate for policy changes to support the use of ICEBs in housing construction.



### **Goal: Showcase the potential of Hemp, Sandbags, ICEBs, Recycled plastic and other sustainable materials in building construction.**

#### Activities:

- Secure funding for the construction of demo buildings.
- Partner with stakeholders to design and build innovative and sustainable structures.
- Utilize locally sourced and low-carbon materials in construction.
- Open the demo buildings to the public for tours and educational workshops.
- Collect data and feedback to improve future construction projects.



### **Goal: Expand our knowledge base and expertise in the areas of ICEBs, sustainable construction, and social enterprise.**

#### Activities:

- Conduct research on the environmental and social impact of ICEBs and Hemp production.
- Investigate innovative uses for hemp beyond construction e.g. textile industry.
- Partner with academic institutions and research organizations to collaborate on projects.
- Share research findings through publications, workshops, and conferences.



**Goal: Create an ecosystem that fosters and supports local entrepreneurs and social enterprises.**

**Activities:**

- Secure funding for the development of a physical entrepreneurship hub.
- Provide training and mentorship programs for aspiring entrepreneurs.
- Facilitate networking and collaboration opportunities among entrepreneurs.
- Offer access to shared resources and facilities.
- Organize events and workshops to promote entrepreneurship and social innovation.

**Goal: Expand to other Sub-Saharan African Countries**

**Activities:**

- Identify potential partners organisations whose missions align with ours and whose collaboration could mutually benefit all parties involved.
- Training and Capacity Building: Offer training sessions and workshops to share knowledge, skills, and best practices on participatory design, the in loco methodology and our Entrepreneurship Development Program.
- Regular Evaluation: Establish regular communication channels to keep all partners informed of progress, challenges, and successes. Conduct periodic evaluations to assess the partnership's effectiveness and make necessary adjustments.
- Marketing and Promotion: Collaborate on marketing and promotional activities to raise awareness about the partnership's initiatives and impact, thereby increasing public engagement and support.
- Celebrate Achievements: Acknowledge and celebrate milestones and achievements reached through the collaborative efforts of the partnership. This can help maintain enthusiasm and commitment among partners.
- Continuous Exploration of New Partnerships: Keep an eye out for additional opportunities to partner with other social enterprises and non-profits that can further expand the collective impact.



**Additional Priorities:**

- Strengthen organizational capacity: Invest in team training, technology, and infrastructure to support our growth and impact.
- Expand partnerships: Collaborate with government agencies, NGOs, businesses, and other stakeholders to leverage resources and expertise.
- Increase visibility and advocacy: Raise awareness of our work and advocate for policies that support our mission.
- Measure and evaluate impact: Track our progress and demonstrate the positive outcomes of our work to donors and stakeholders.

# MEET THE TEAM



**DANIELA GUSMAN**  
Founder & Executive  
Director



**REITUMETSE NTHAKO**  
Country Director



**LUCA ASTORRI**  
*in loco* Program Director  
& Lead Architect



**PEDRO CLARKE**  
*in loco* Program Director  
& Lead Architect



**MAMONAHENG RALIILE**  
Finance & Admin Manager



**TIISETSO MOROKE**  
Projects Coordinator



**MOPELI CHRIS THEKO**  
Communications and  
Development Coordinator



**MINAH LEKAU**  
M&E Coordinator



**REITUMETSE  
RAPHANYANE**  
Administration & Finance  
Assistant



**THATO NIKIKANA**  
Construction & Design  
Coordinator



**RETS'EPILE RAMMOKO**  
Architectural Designer



**VALENTINA RIVERSO**  
Architectural Assistant



**RAMAROU TSOHO**  
Construction Supervisor



**TUMELO SETHUNSA**  
Construction Coordinator



**MANEO SEEKANE**  
Business Trainer



**QUINN LEBOHANG  
MOHLOKAQALA**  
Consultant Project  
Manager



**KEKETSO SULA**  
Site Manager



**CHOKOTSI MOKOMA**  
Site Manager

# FINANCIAL OVERVIEW

FINANCIAL SUMMARY COVERING OCTOBER 2021 TO NOVEMBER 2023

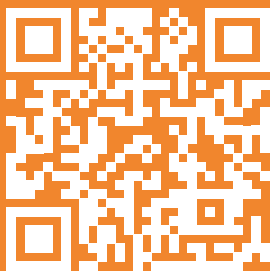
EXPENSE TYPE	TOTAL COST IN LSL	% OF TOTAL COSTS	USD (\$) RATE M18.33 = \$1
ADMINISTRATION COSTS	321,014	4.68	17,513
TRANSPORT	644,374	9.39	35,154
STAFF WELFARE	186,591	2.72	10,180
CONSTRUCTION MATERIAL	1,842,664	26.84	100,527
LABOUR	3,046,126	44.38	166,183
RENT	248,763	3.62	13,571
TOOLS AND EQUIPMENT	299,158	4.36	16,321
INSURANCE	86,550	1.26	4,722
COMMUNICATION	116,372	1.70	6,349
COMMUNITY EVENTS	23,755	0.35	1,296
UTILITIES	48,918	0.71	2,669
TOTAL	6,864,285	100.00	374,484

JOIN rise ON OUR JOURNEY  
BY SUBSCRIBING TO OUR  
NEWSLETTER HERE AND  
FOLLOWING ON :

[www.riseint.org](http://www.riseint.org)



SUPPORT US VIA:



<https://riseint.org/donate/>

