

final design

PROJECT LESOTHO

48 sqm / 4 residents

block 038

the project consists of a modular interior that can reinvent itself during the day and night.

in order to maximize the living space and interior productivity during the winter, the beds can be folded into the wall and a series of curtains break the privacy into a bigger public realm.

the materiality of the project involves local earth frame that makes a rammed earth facade, where sheep wool could be used as an insulator for the winter times. using traditional vernacular and materiality to create passive cooling methods.

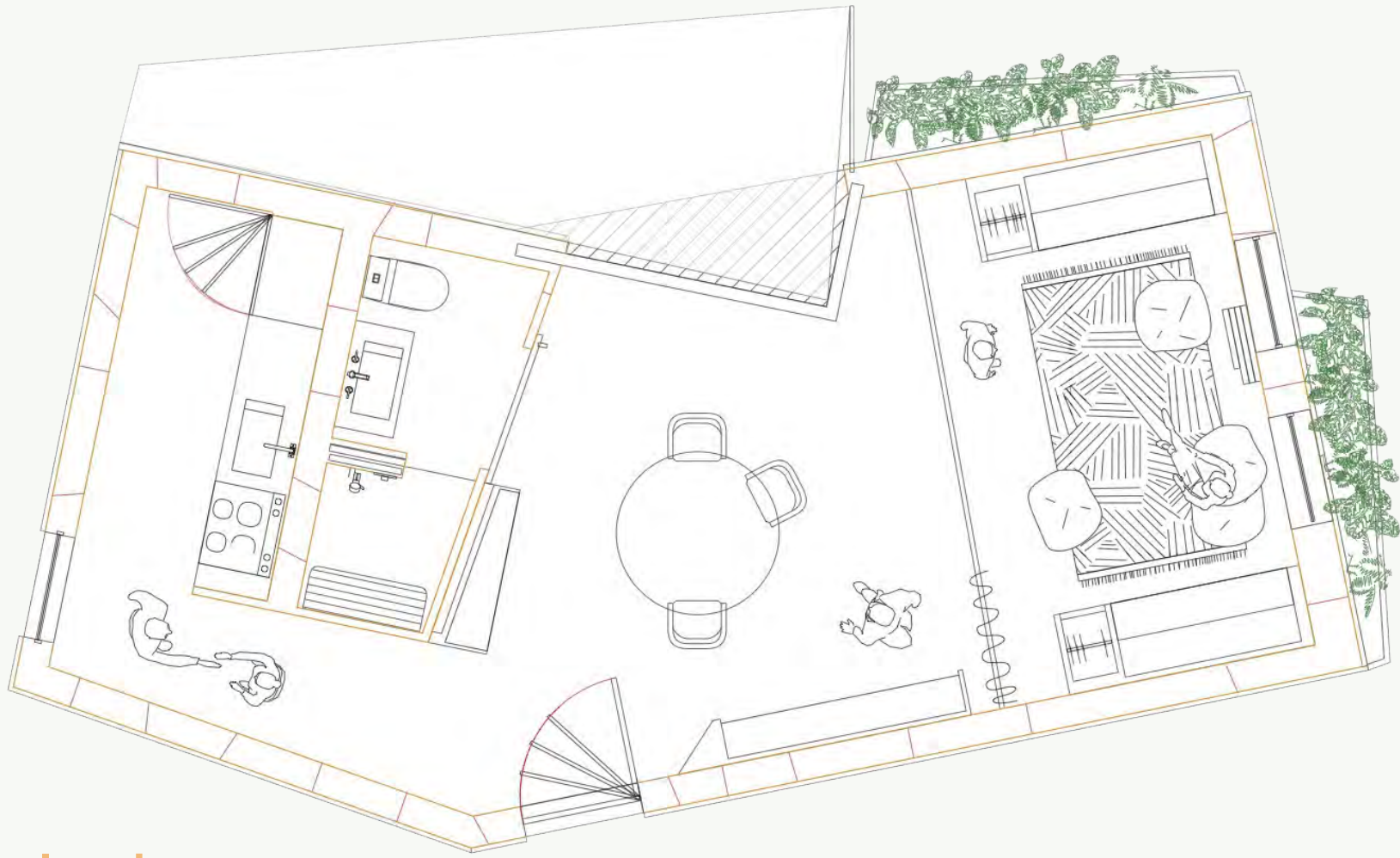


Exterior Collage - Rammed Earth

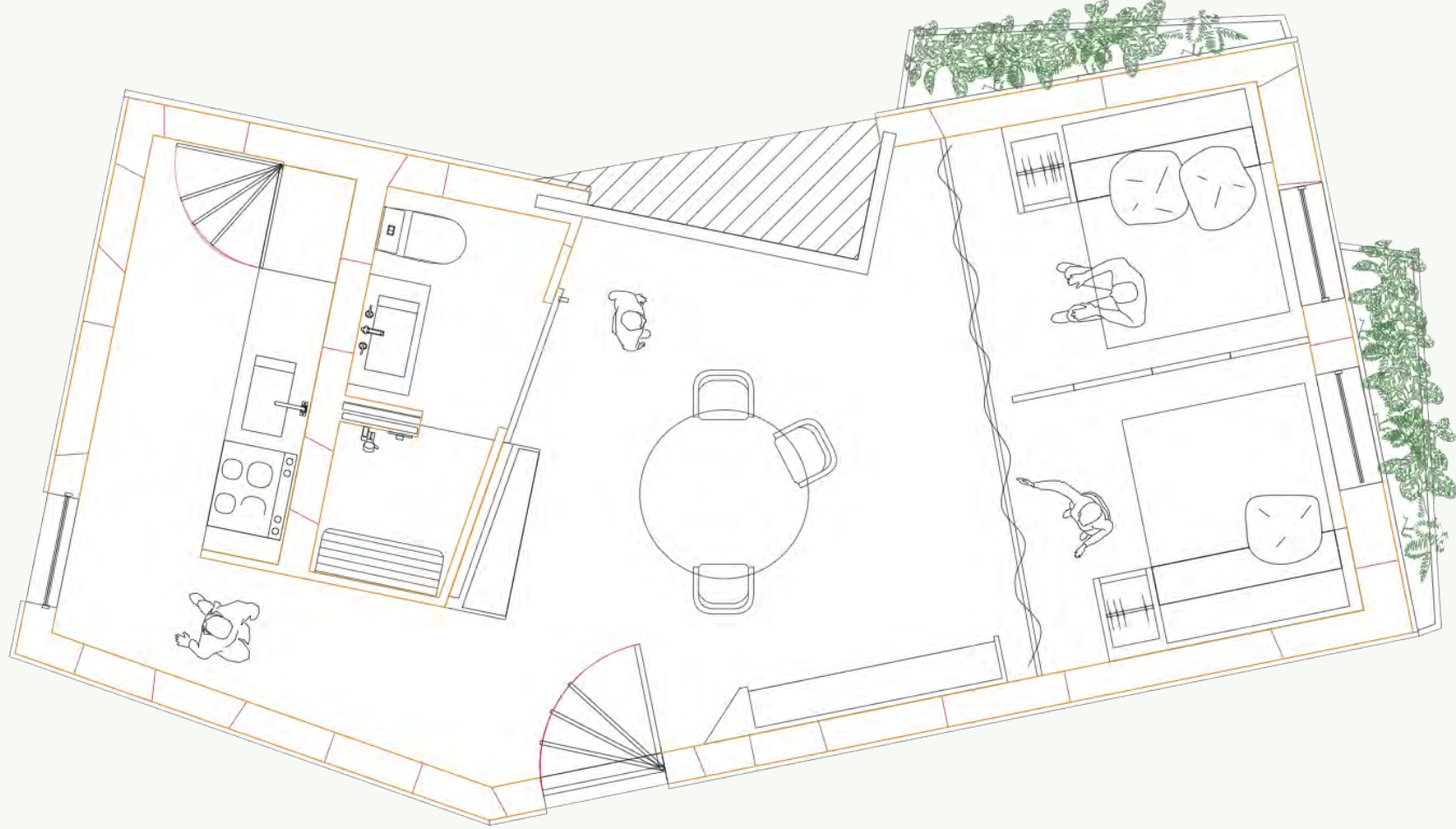


Interior Collage - Interior Textures/Living Space

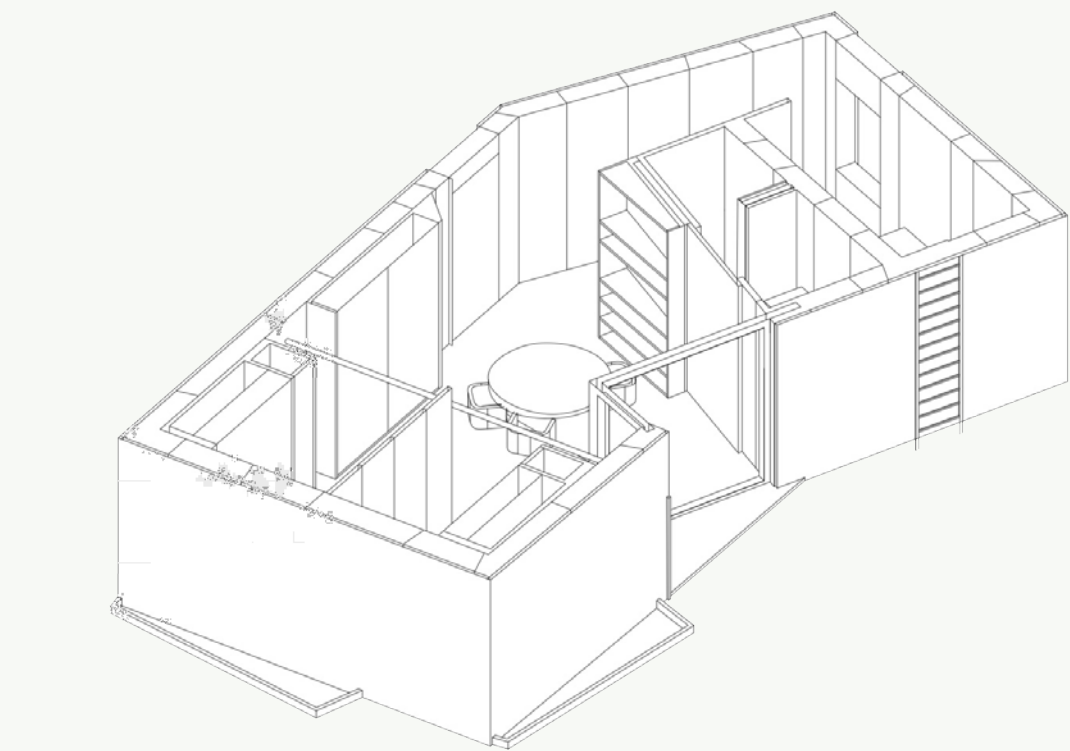
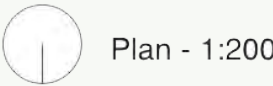
Design



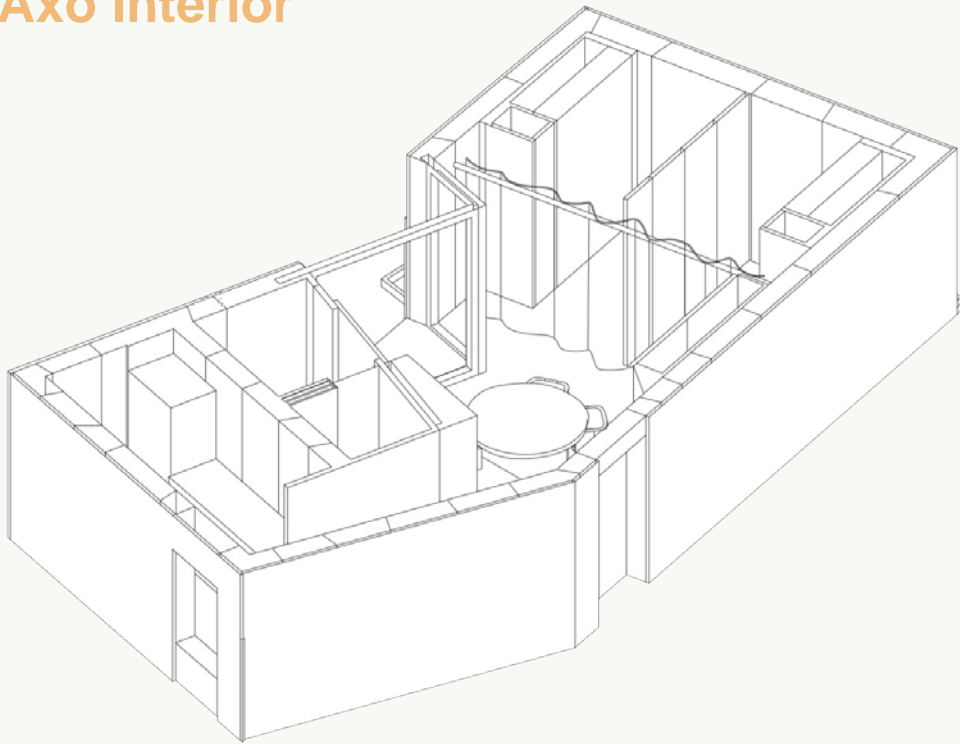
plan day



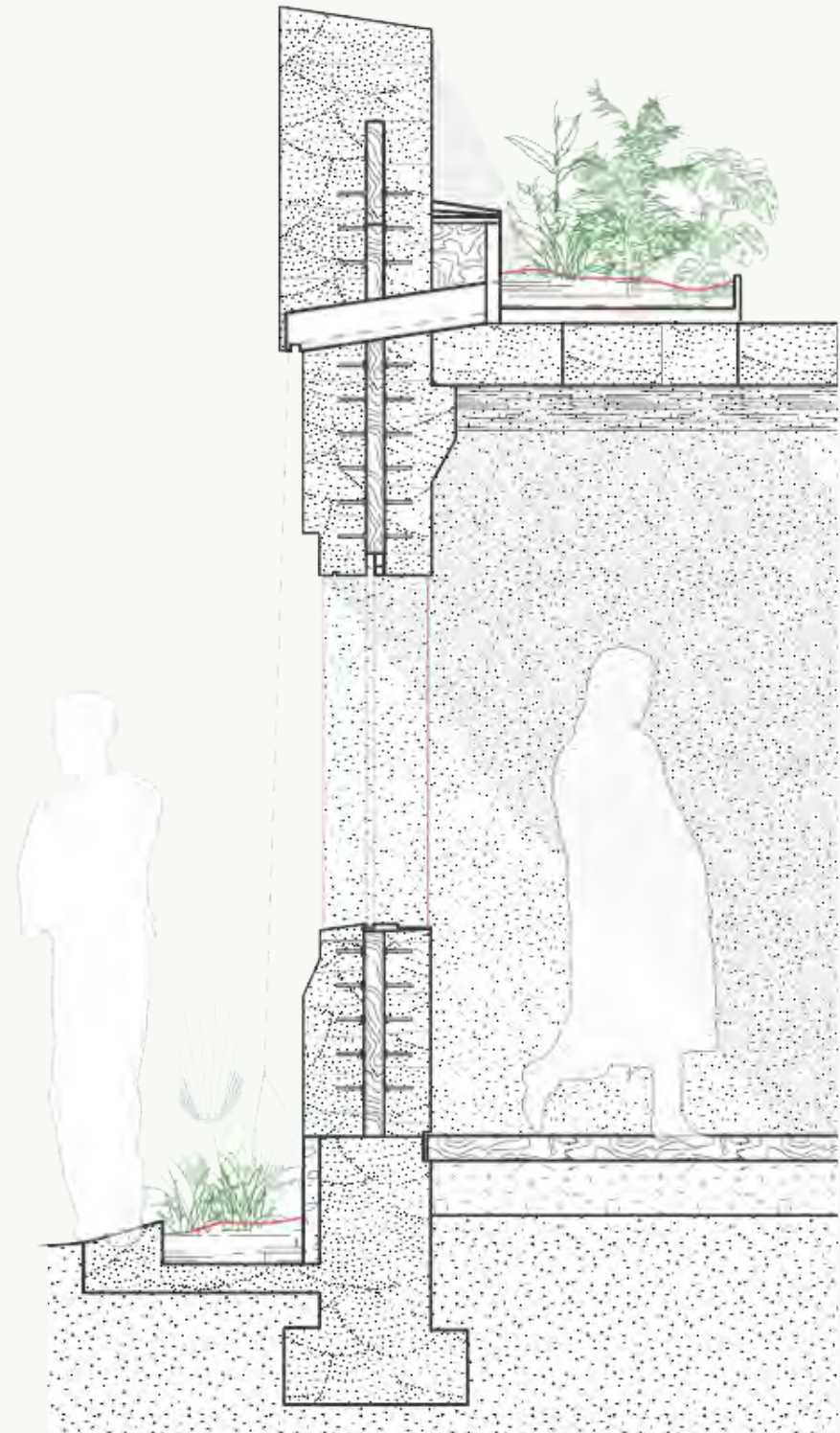
plan night



SW Axo Interior



NE Axo Interior



Section Detail of Wall

BLOCK 038

Statement

the project consists of a modular interior that can reinvent itself during the day and night.

in order to maximize the living space and interior productivity during the winter, the beds can be folded into the wall and a series of curtains break the privacy into a bigger public realm.

the materiality of the project involves local earth frame that makes a rammed earth facade, where sheep wool could be used as an insulator for the winter times. using traditional vernacular and materiality to create passive cooling methods. the rooftop could be accessed with a ladder and becomes a green roof for roof cooling of direct sun and micro agro production for the household.

Cost Estimate

Rammed Earth (Local) Walls - 22m/3 - +/- LSL 19000

(Local South African Laterite Quarry)*

OSB Furniture fixtures - 10 8ftx6ft boards - LSL 8000

-Metal railings, OSB table, OSB murphy bed design

Window Fixtures - 3000 LSL

-Plastic molds, wood details.

Plumbing - LSL 9000

(Sinks, faucets, metal fixtures)

-plastic molds for fixtures, piping connectors

Green Roof

Membrane sheeting, paneling, soft soil - LSL 4000

Lighting - 3 fixtures - LSL 1000

Copper details - 2m pipe - LSL 1000

Plants for passive cooling

(Vines, South African bamboo) - LSL 2000

Glass sliding door patio

(Could be melted plastic forged into translucent wall) - LSL 2000

Total = +/- LSL 50000

