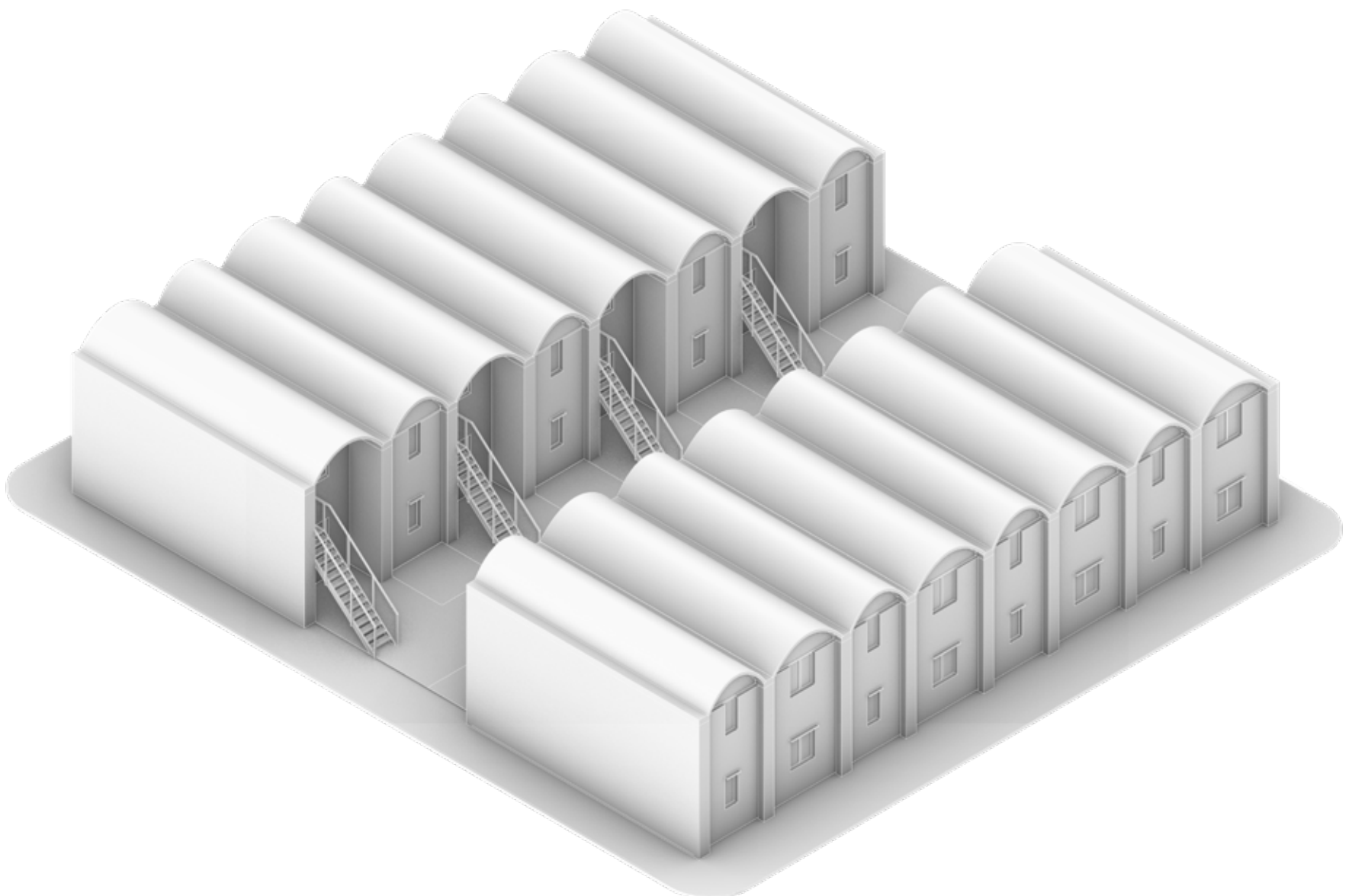


ritc

AFFORDABLE HOUSING COMPETITION

The Unit here presented tackles the problem of affordable housing in Maseru through the use of cheap locally available materials such as sandstone and soil, both of which with great thermal properties. The small unit are stacked on top of each other and combined in order to form a block of row houses



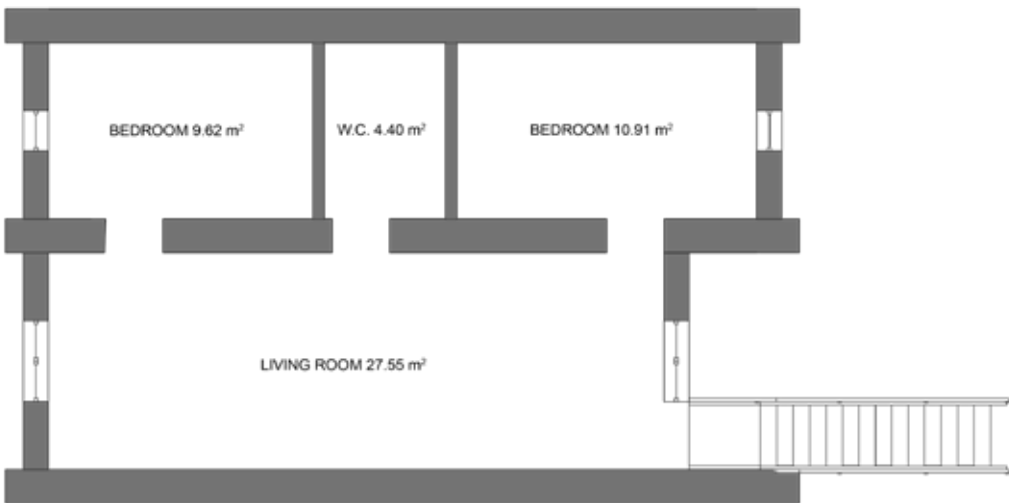
LOCAL MATERIALS
Sandstone and locally sourced earth as primary building materials



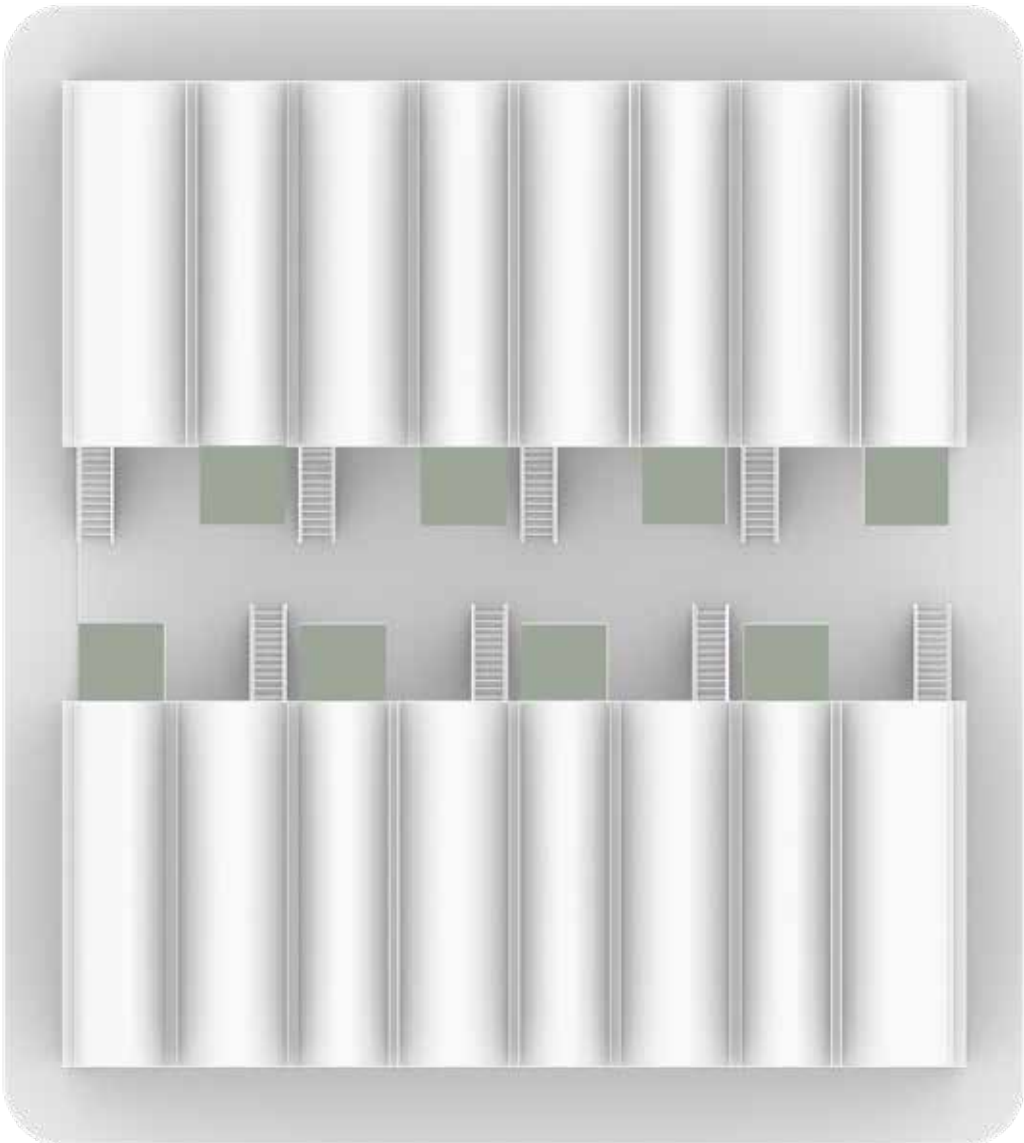
APPROPRIATE TECHNIQUES
Thin soil-pressed tile vaulting for ceiling and roof



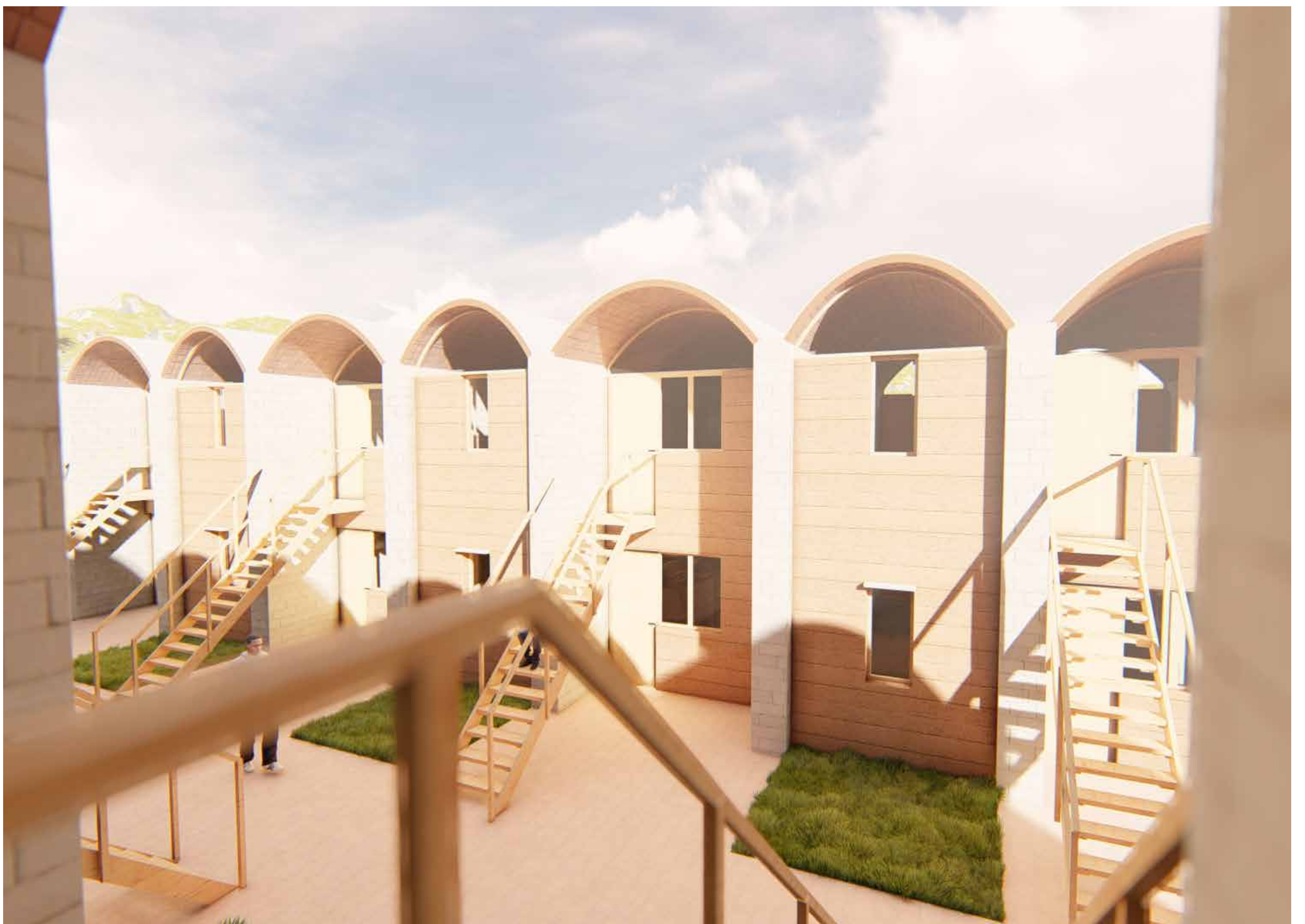
COMPACT PLAN
51 m² unit



DENSITY
16 units in a 30x30 plot



COMMUNAL SPACE
Semi-private cozy courtyard



MAIN BUDGET BREAKDOWN

<i>material</i>	<i>quantity</i>	<i>ost</i>
Sandstone for foundations and load bearing walls	547m3	Hand Crushed - Labor costs only
Compressed earth blocks	128m3	Hand Pressed Tiles - Labor costs only
Concrete	29,268 kg	47054 LSL
Steel Rods	50 of 6x6000mm	1500 LSL

