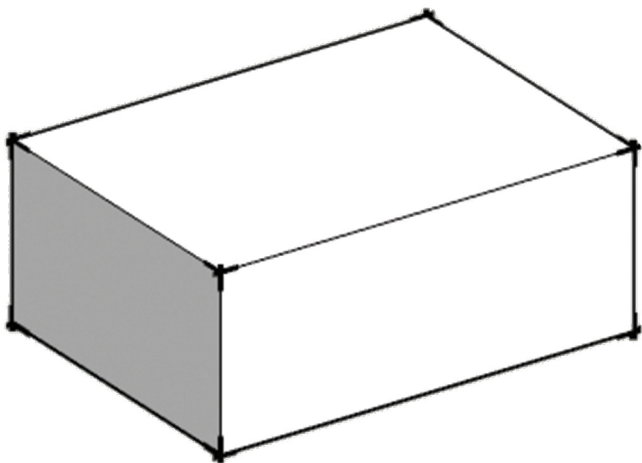
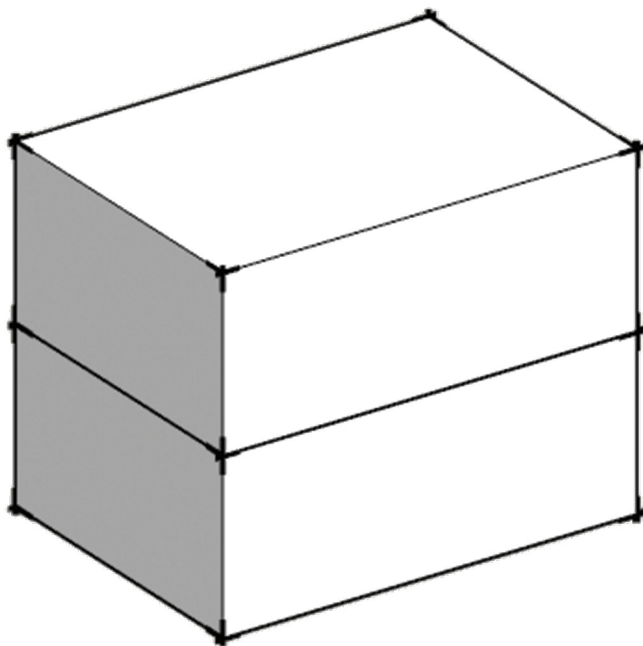


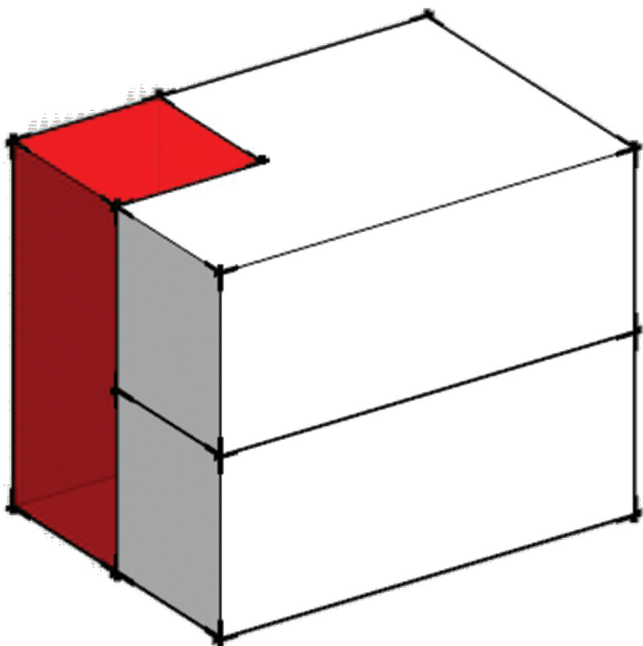
# CONCEPT DIAGRAM



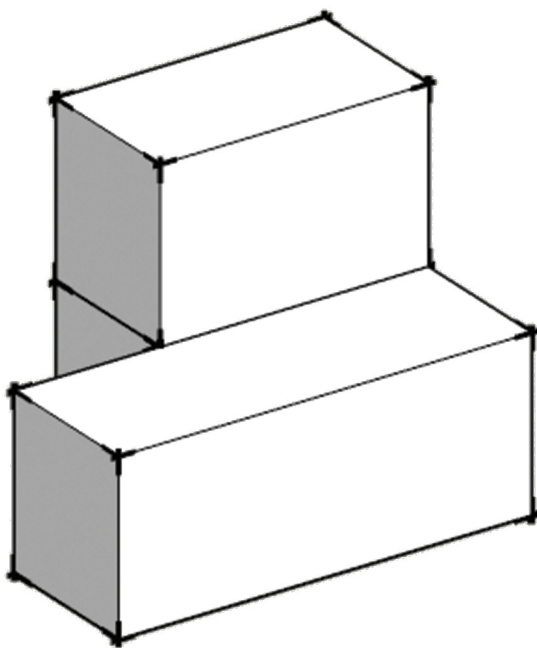
**Form evolution:**  
a base rectangular cuboid evolved to bring the maximum function space inside the houses.



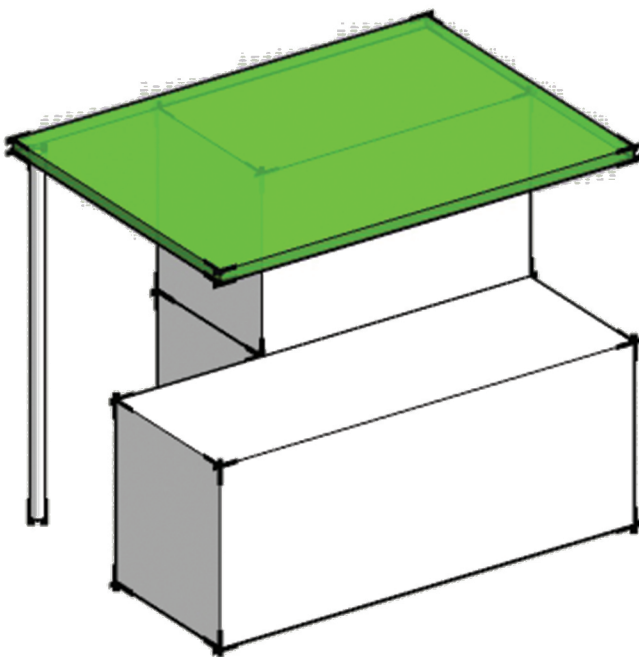
**Addition of floor:**  
Floor added for the future expansion,  
A bedroom placed on the first floor which makes  
the user to engage with different levels.



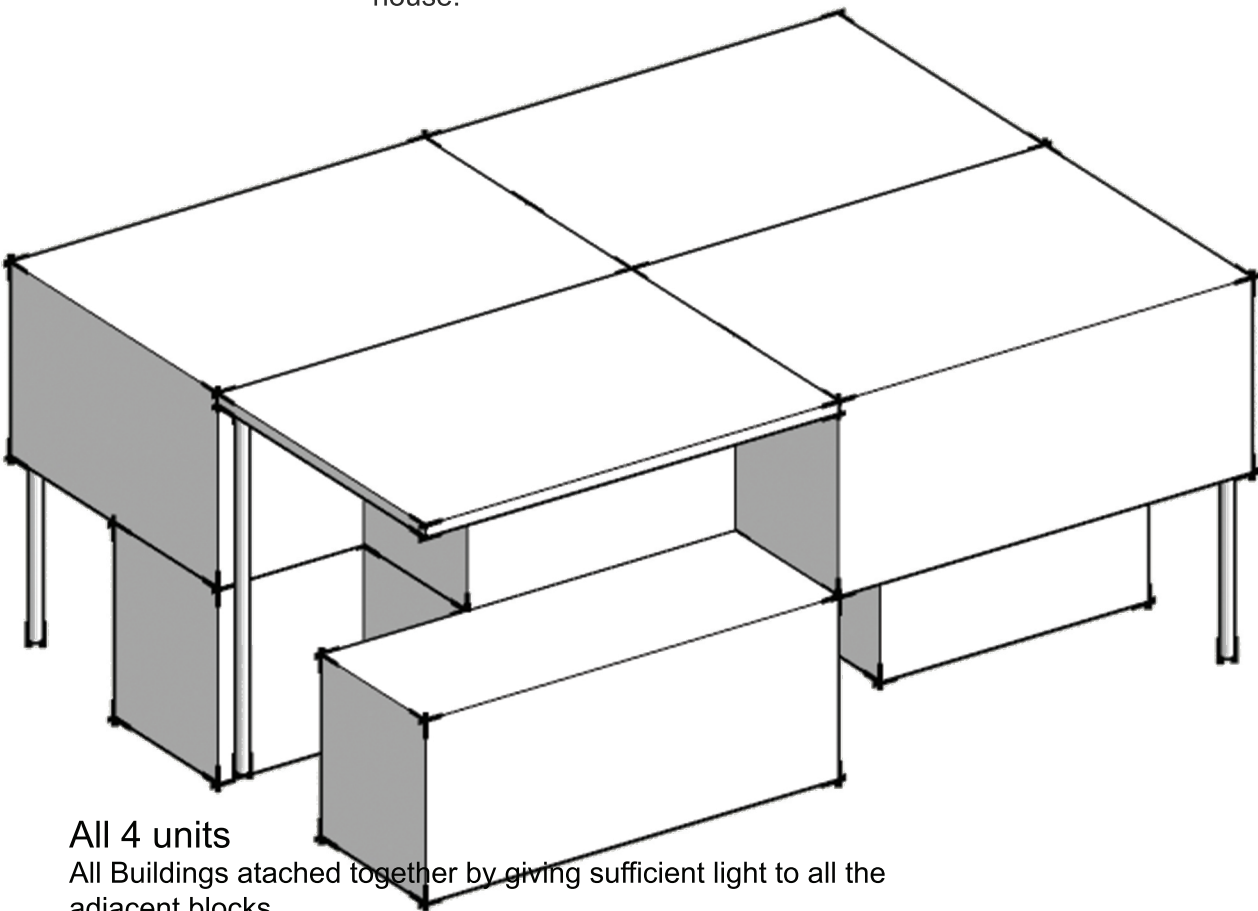
**Courtyard Space:**  
The whole house is perfectly ventilated by courtyard which also  
serves as the double height space bringing diffused light inside the  
house.



**Eliminating-out excess space:**  
The house is accomodated as per the requirement and  
additional spaces is used for the future expansion

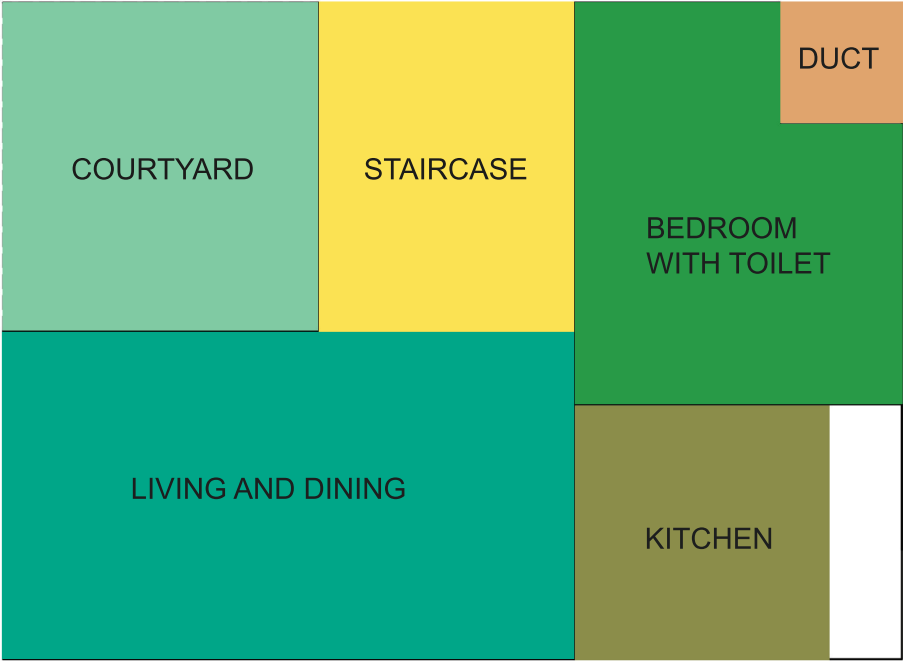


**Building Roof:**  
Building roof is placed in such a way that it covers all the building  
which is including the courtyard, this will help in bringing sufficient  
ventilation and provide cover from rainfall and wind

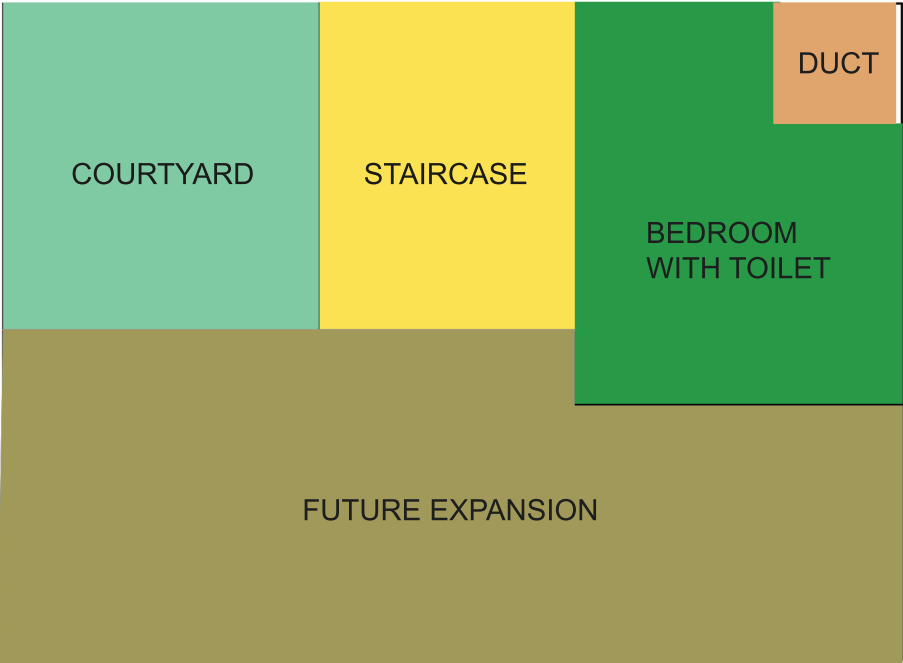


**All 4 units**  
All Buildings atached together by giving sufficient light to all the  
adjacent blocks

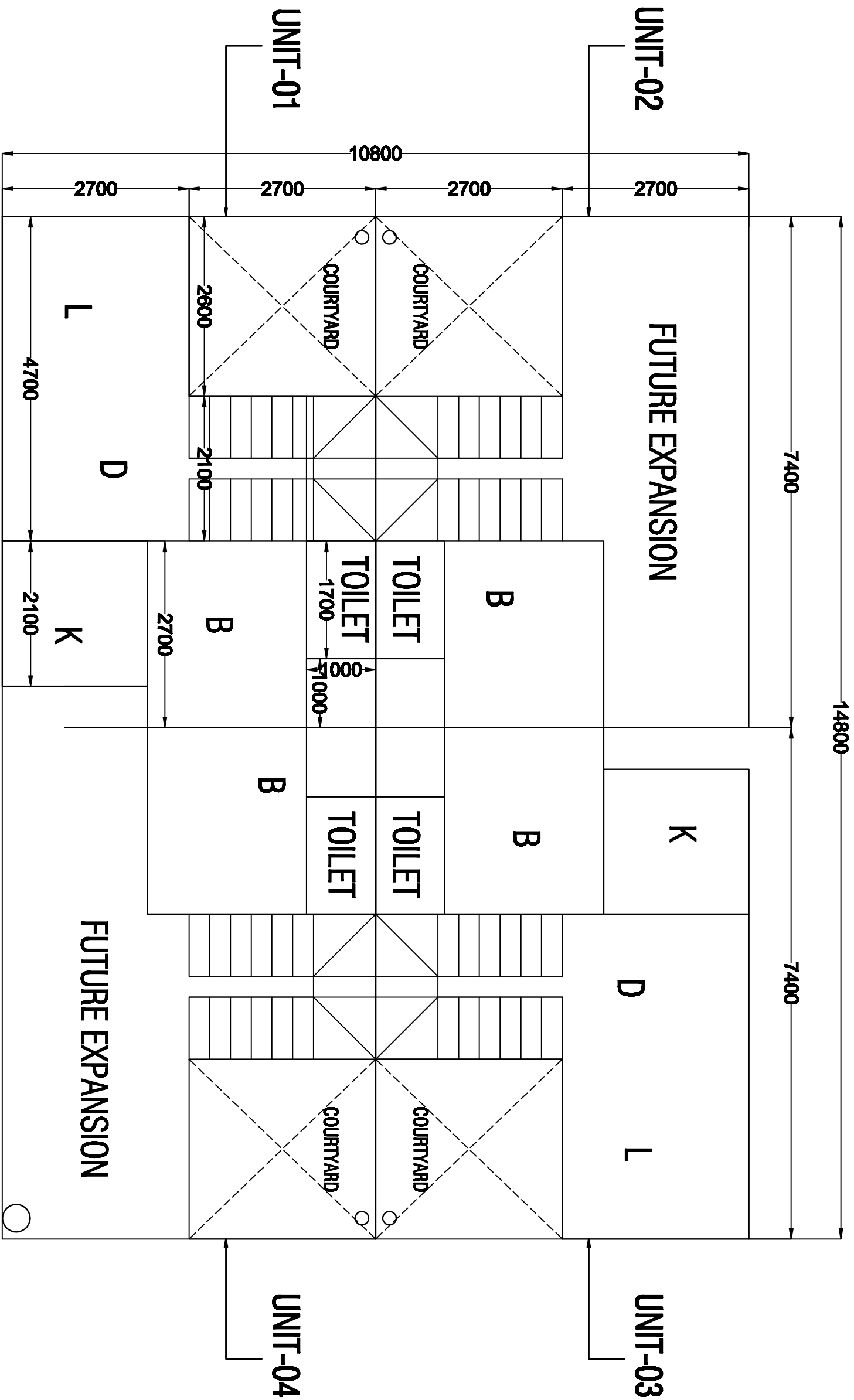
FUNCTIONAL DIAGRAM



GROUND FLOOR

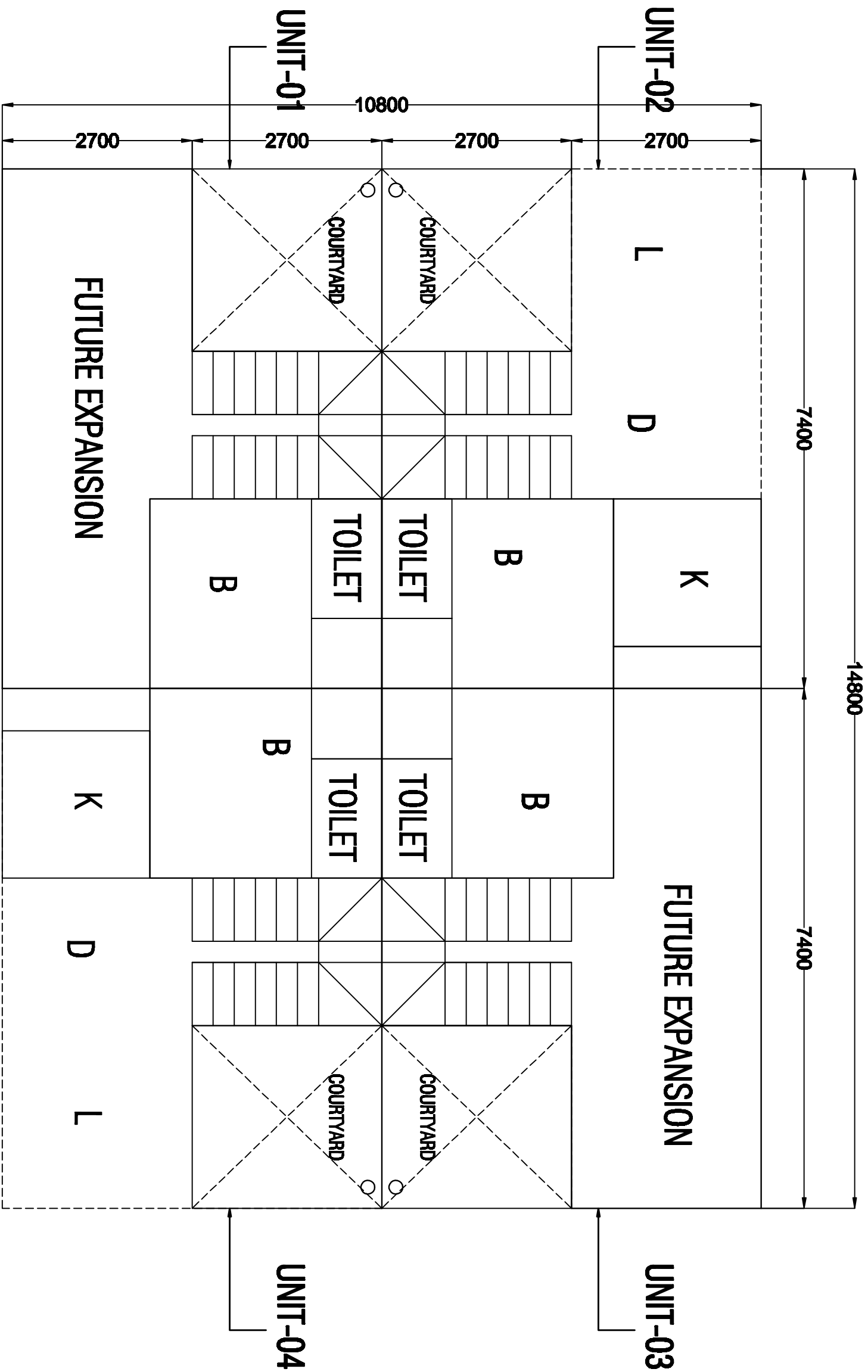


FIRST FLOOR



GROUND FLOOR

- LEGENDS
- L-LIVING ROOM
  - B-BEDROOM
  - K-KITCHEN
  - D-DINING



- LEGENDS
- L-LIVING ROOM
  - B-BEDROOM
  - K-KITCHEN
  - D-DINING